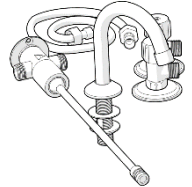


# Chrome Plated Knee Operated Timeflow Valve w/ Regulator, Spout & Connection Kit

## PRODUCT CODE:

- TP08045K



## SPECIFICATIONS

- Time flow taps are designed to operate at full mains pressure.
- The valve has a unique self-closing operation.
- The taps are made of chrome plated brass.
- Clean hygienic design
- Water efficient
- Low maintenance and easy to operate

**IMPORTANT:** All taps are tested in accordance with AS/NZS 3718 and leave our premises in good working order. Time may vary due to changes in temperature, pressure, flow rate and water quantity.

## TECHNICAL DATA

Inlet (Knee Valve)	1/2" BSP - Female	
Outlet	Aerator	
Headwork	Time Flow Cartridge (15 seconds)	
Working Pressure Range (kPa)	Min	100
	Max	500
Working Temperature Range (°C)	Min	5
	Max	65
Nominal Flow Rate (LPM)	4.29	
Finish	Chrome	

**NOTE:** Galvin Engineering continually strive to improve their products. Specifications may change without notice.

**WARNINGS:** Special attention to be paid on notes, photos, images, or drawings of assembly steps marked with the warning symbol.



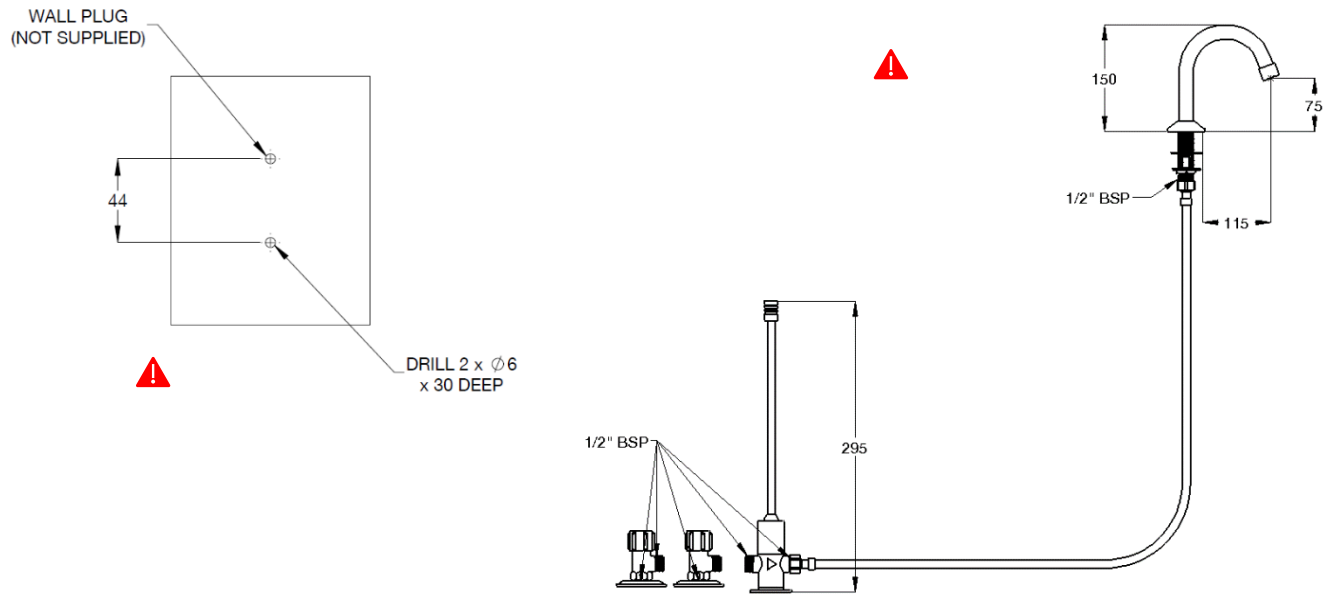
## TOOLS REQUIRED

- Spanner or adjustable crescent
- Screwdriver
- Power Drill

## PRE-INSTALLATION - MOUNTING DETAILS

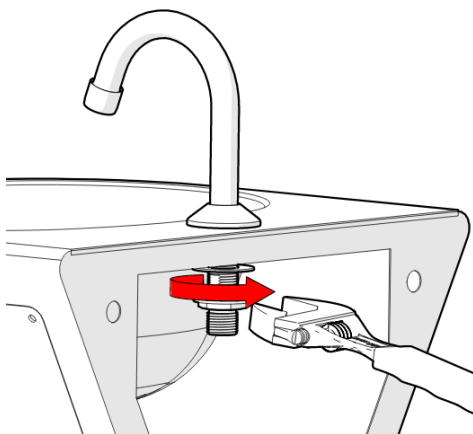
**Note:** Before installation, all lines must be flushed. Galvin Engineering recommends the installation of strainers and pressure reducing valves to ensure clean consistent supply. Debris or poor water quality could cause the mechanism to seize or fail to seal.

If the mounting holes do not already exist, mark out and drill the holes, as shown in rough-in dimensions.



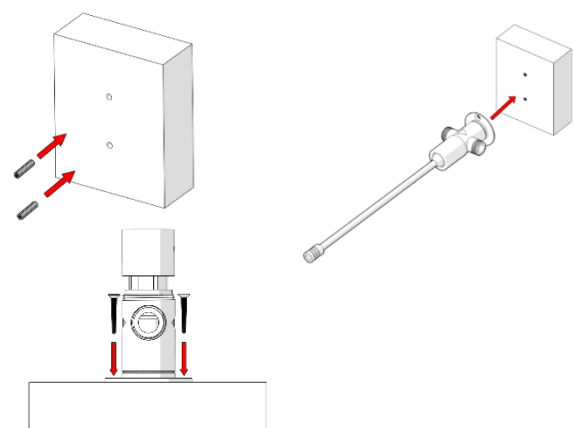
## INSTALLATION

**IMPORTANT:** Galvin Engineering products must be installed in accordance with these installation instructions and in accordance with AS/NZS 3500, the PCA and your local regulatory requirements. Water and/or electrical supply conditions must also comply to the applicable national and/or state standards. Failing to comply with these provisions shall void the product warranty and may affect the performance of the product.



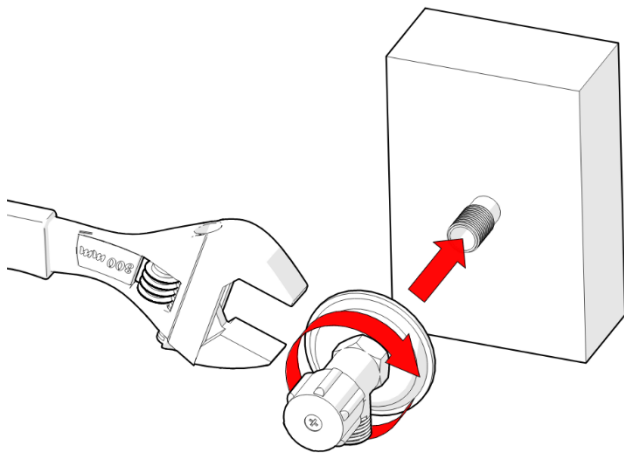
### 1. Fit the gooseneck outlet

- Fit the gooseneck outlet onto the basin.
- Fit the rubber washer then backnut and tighten.



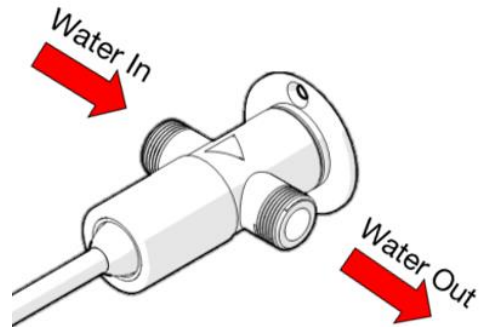
### 2. Mounting wall valve

- Ensure the wall plug holes are as per rough-in dimensions above.
- Fit wall plugs (not supplied).
- Secure the wall valve with suitable screws (not supplied) as shown.



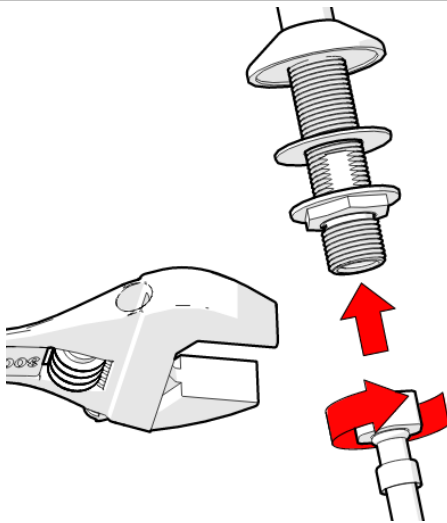
### 3. Mount cistern cock (hot & cold)

- Two cistern cocks are supplied for installations requiring mixed temperature water.
- Fit cistern cock as shown
- When applying thread tape or sealant to the inlet, ensure the opening is not obscured.



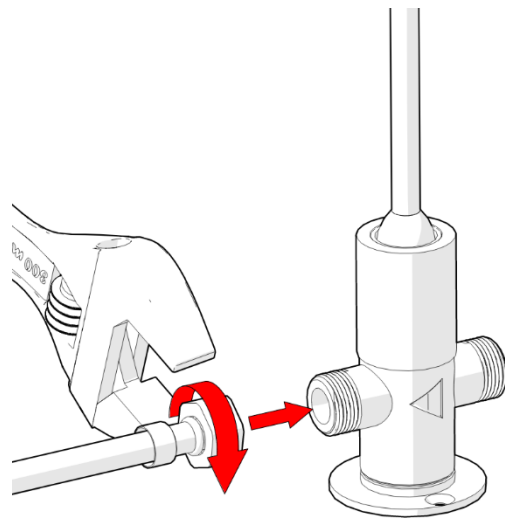
### 4. Fit water connections

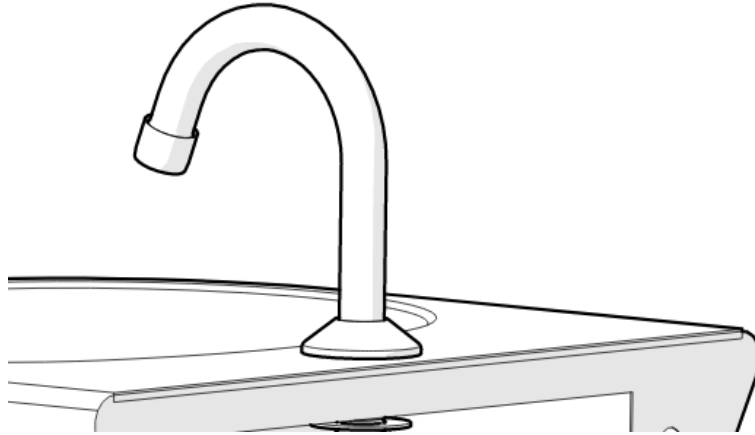
- When applying thread tape or sealant to the inlet, ensure the opening is not obscured.
- Fit water connections as shown ensuring the water flow is as per the indicator marked on the valve body.



### 5. Connect the hose

- Fit hose to gooseneck and valve as shown. Direction of flow indicated by arrow on body.
- When applying thread tape or sealant to the inlet, ensure the opening is not obscured.





## 6. Test unit

- Turn on the water supply, inspect the tap and check for any leaks.

## TROUBLESHOOTING

PROBLEM	CAUSE	RECTIFICATION
Water is not flowing from tap	Mains supply is turned off	Turn on mains supply.
Rate of flow inadequate.	The flow restrictor may not be satisfactory due to inadequate supply pressure.	Remove flow restrictor and replace with a new flow restrictor of different capacity to suit
No time flow – water shuts off upon release.	Small spring at the bottom of the cartridge piston dislodged.	Relocate spring, regrease spindle if required.

## WARRANTY

The warranty set forth herein is given expressly and is the only warranty given by the Galvin Engineering Pty Ltd. With respect to the product, Galvin Engineering Pty Ltd makes no other warranties, express or implied. Galvin Engineering Pty. Ltd. hereby specifically disclaims all other warranties, express or implied, including but not limited to the implied warranties of merchantability and fitness for a particular purpose.

Galvin Engineering Pty Ltd products are covered under our manufacturer's warranty available for download from [www.galvinengineering.com.au](http://www.galvinengineering.com.au). Galvin Engineering Pty Ltd expressly warrants that the product is free from operational defects in workmanship and materials for the warranty period as shown on the schedule in the manufacturer's warranty. During the warranty period, Galvin Engineering will replace or repair any defective products manufactured by Galvin Engineering without charge, so long as the terms of the Manufacturer's warranty are complied with.

The remedy described in the first paragraph of this warranty shall constitute the sole and exclusive remedy for breach of warranty, and Galvin Engineering Pty Ltd shall not be responsible for any incidental, special or consequential damages, including without limitation, lost profits or the cost of repairing or replacing other property which is damaged if this product does not work properly, other costs resulting from labour charges, delays, vandalism, negligence, fouling caused by foreign material, damage from adverse water conditions, chemical, electrical or any other circumstances over which Galvin Engineering has no control. This warranty shall be invalidated by any abuse, misuse, misapplication, improper installation or improper maintenance or alteration of the product.

Within Australia: **1300 514 074** Outside Australia: P: **+61 (0)8 9338 2344**

F: **+61 (0)8 9338 2340**

[sales@galvinengineering.com.au](mailto:sales@galvinengineering.com.au)

[www.galvinengineering.com.au](http://www.galvinengineering.com.au)

ABN: 78 008 719 382

PERTH | SYDNEY | MELBOURNE | BRISBANE | ADELAIDE

